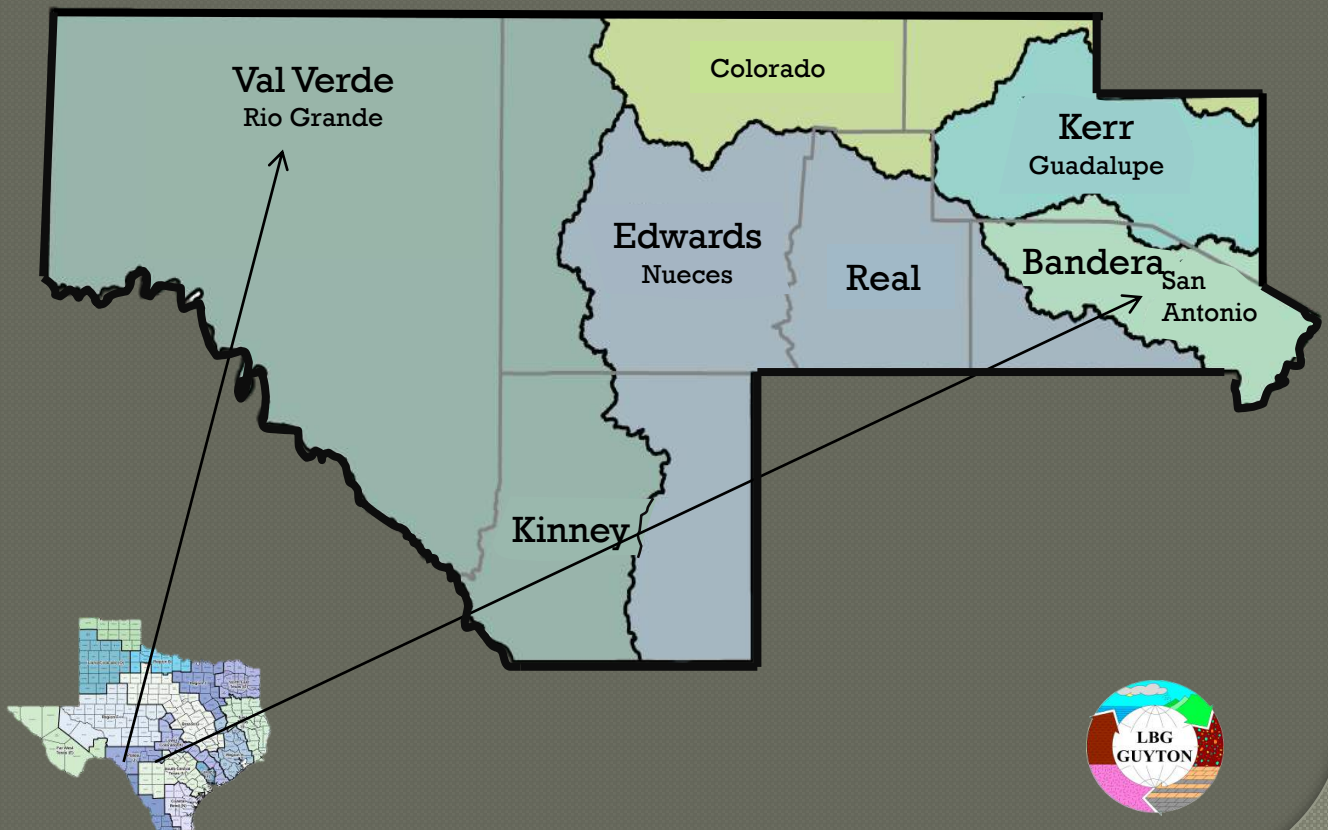


# Plateau Region

## 2016 County Summary Report

Prepared For  
Plateau Region Water Planning Group

Prepared By  
LBG-Guyton Associates



*This page intentionally left blank*

## INTRODUCTION

The *2016 Plateau Region Water Plan* provides an evaluation of current and future water demands for all water-use categories, and considers available water supplies and management strategies to meet both long- and short-term identified water supply needs. The Plateau Water Planning Region (Region J) stretches from the Central Texas Hill Country westward to the Rio Grande and consists of Bandera, Edwards, Kerr, Kinney, Real and Val Verde Counties.

The Plateau Region Planning Group is a voluntary association comprised of members representing a minimum of 11 water-use categories, including at least one representative from each of the six counties and from the three Groundwater Management Areas (GMAs). The Group is charged with addressing the needs of all water users and suppliers within the Region, developing water management strategies to meet identified future water supply needs (including conservation practices), and addressing meaningful responses to future droughts.

Every five years water plans developed by the 16 state-wide water planning regions are merged by the Texas Water Development Board (TWDB) into a State Water Plan. The ultimate goal of the State Water Plan is to identify those policies and actions that may be needed to meet Texas' near- and long-term water needs based on a reasonable projected use of water, affordable water supply availability, and conservation of the State's natural resources.

This Plateau Region County Summary Report provides an overview of the six counties' available water resources, projected population and water demand over the 50-year planning horizon, available existing water supplies, and potential water management strategies. A more detailed look into each county can be found within the *2016 Plateau Region Water Plan* located on the TWDB website:

[http://www.twdb.texas.gov/waterplanning/rwp/plans/2016/J/Region\\_J\\_2016\\_RWP.pdf](http://www.twdb.texas.gov/waterplanning/rwp/plans/2016/J/Region_J_2016_RWP.pdf).

## TERMINOLOGY

Population and Water Demand Projections – The TWDB utilized the 2010 Census data in developing the county-level population and water demand projections. Water demand projections were based upon a dry year. According to the National Drought Mitigation Center, 2009 was the driest year and was used as the base for the water demand projections.

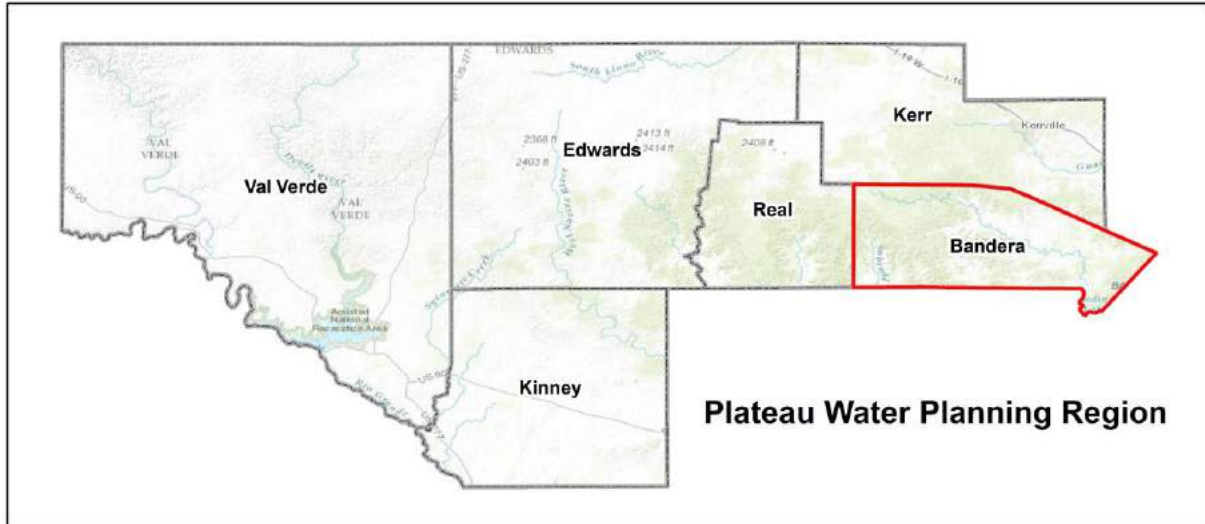
Source Water Availability – The maximum amount of raw water available from a source during a drought of record, regardless of whether the supply is physically or legally accessible by a water-user group (WUG) or a wholesale water provider (WWP).

Existing Infrastructure Water Supply – The amount of water that is physically and legally available for use by a WUG. Often this volume of water is defined by infrastructure capacity.

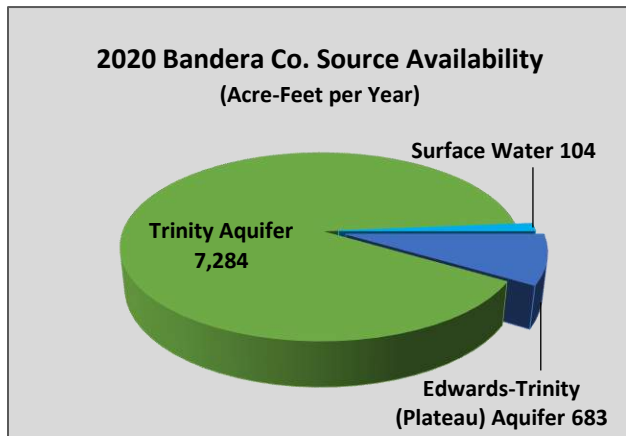
Water Need – A need for water is identified when existing water supplies are less than projected water demands for the same WUG within any planning decade.

Water Management Strategy – A strategy developed to create additional, new water for those areas where water needs have been determined. Strategies are evaluated based on criteria such as: water quantity, water quality, reliability, financial costs and environmental impacts.

# BANDERA COUNTY

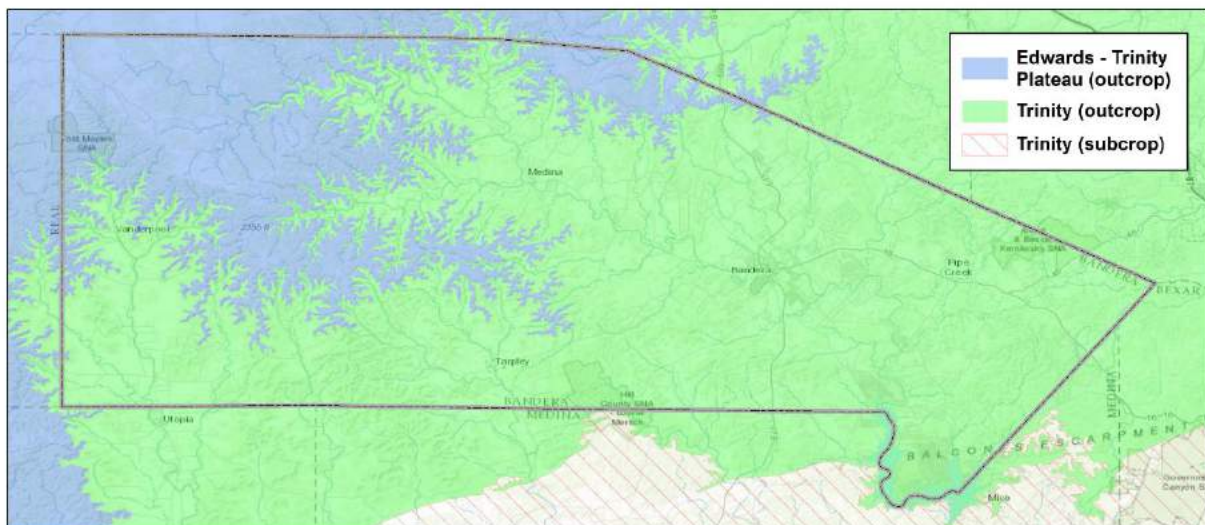


**Who are my water-planning representatives?** Jonathan Letz – Planning Group Chairman; David Maulk – Bandera County RAGD (General Manager); W. Feathergail Wilson – County Planning Representative and Homer T. Stevens – County Planning Representative.

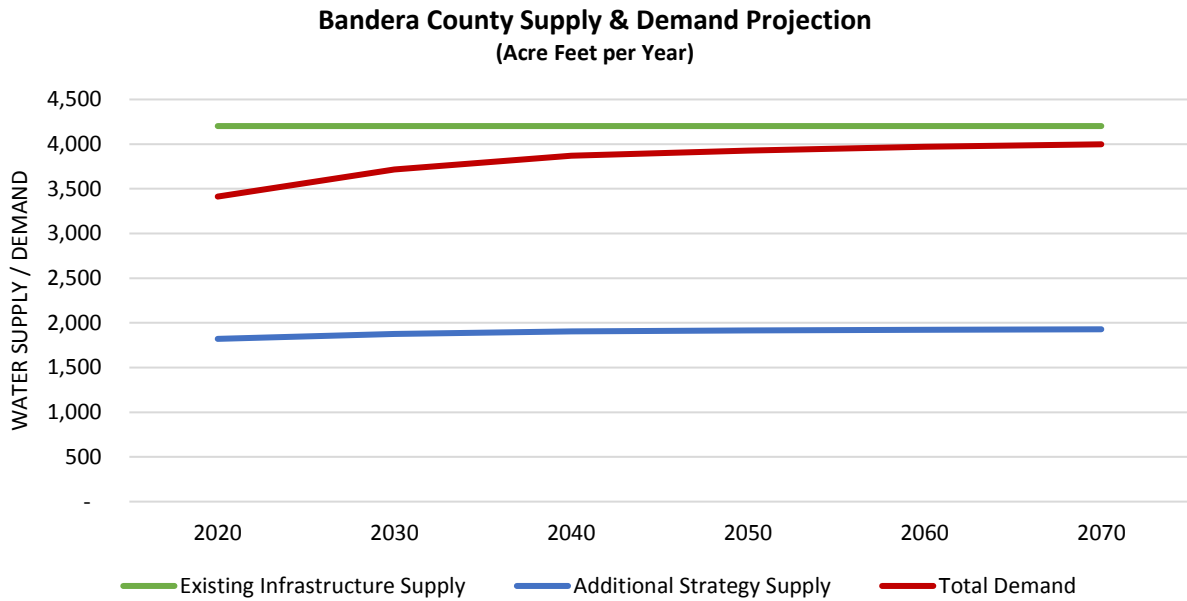
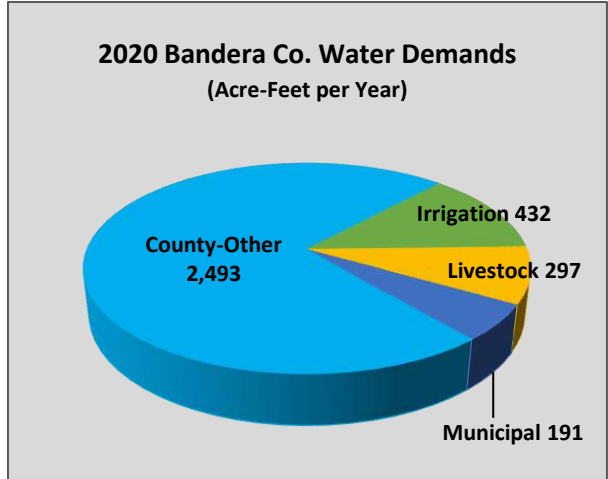
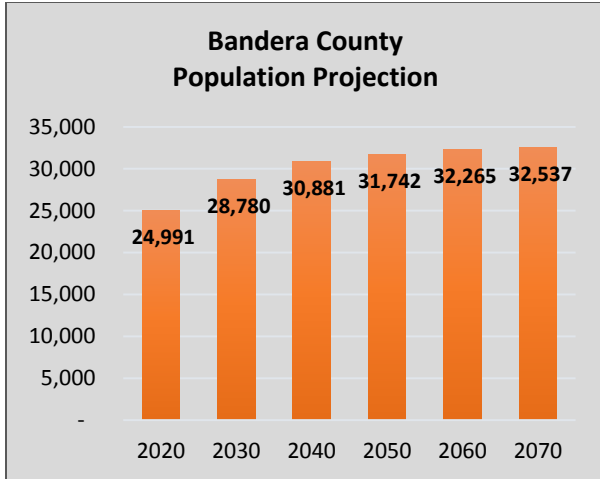


## What are the sources of my water supplies?

- Edwards-Trinity (Plateau) Aquifer
- Trinity Aquifer
- Surface Water:
  - Guadalupe River Tributaries
  - Nueces River
  - San Antonio / Medina River

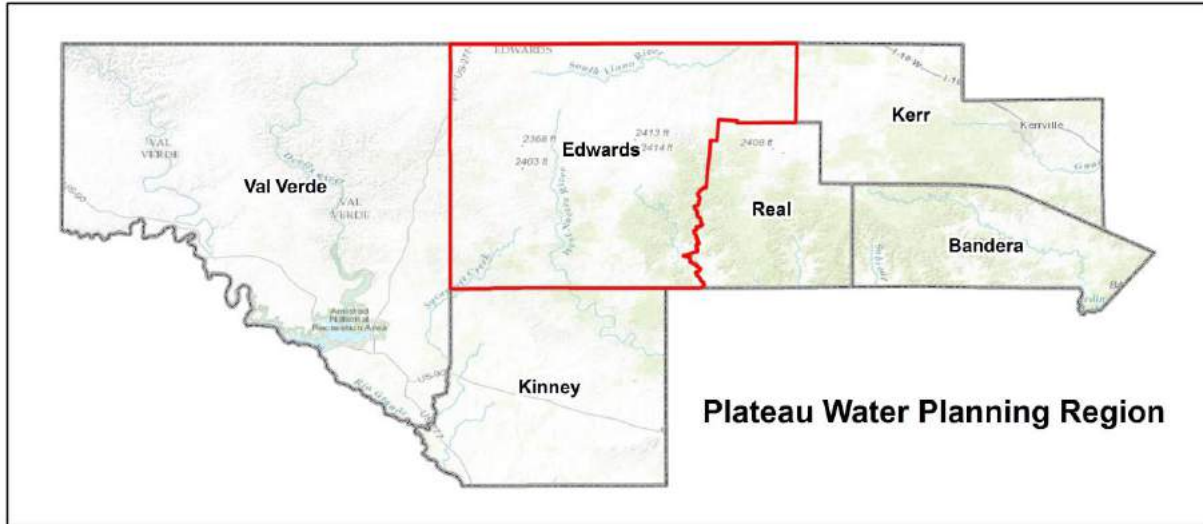


# BANDERA COUNTY

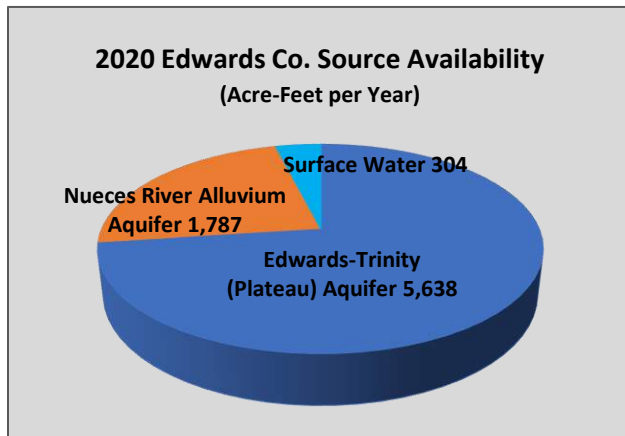


Water User Group	Strategy
City of Bandera	Reuse treated wastewater effluent for municipal irrigation use
	Promote, design & install rainwater harvesting systems
	Additional Lower Trinity well and lay necessary pipeline
	Additional Middle Trinity wells within City water infrastructure
County-Other	Water loss audit and main-line repair
	Vegetative land use management
	Drought management (BCRAGD)
	Additional well for Pebble Beach subdivision
	Additional wells to provide emergency supply to VFD
	Additional wells to help Medina Lake area
Irrigation	Additional groundwater wells
Livestock	Additional groundwater well

# EDWARDS COUNTY

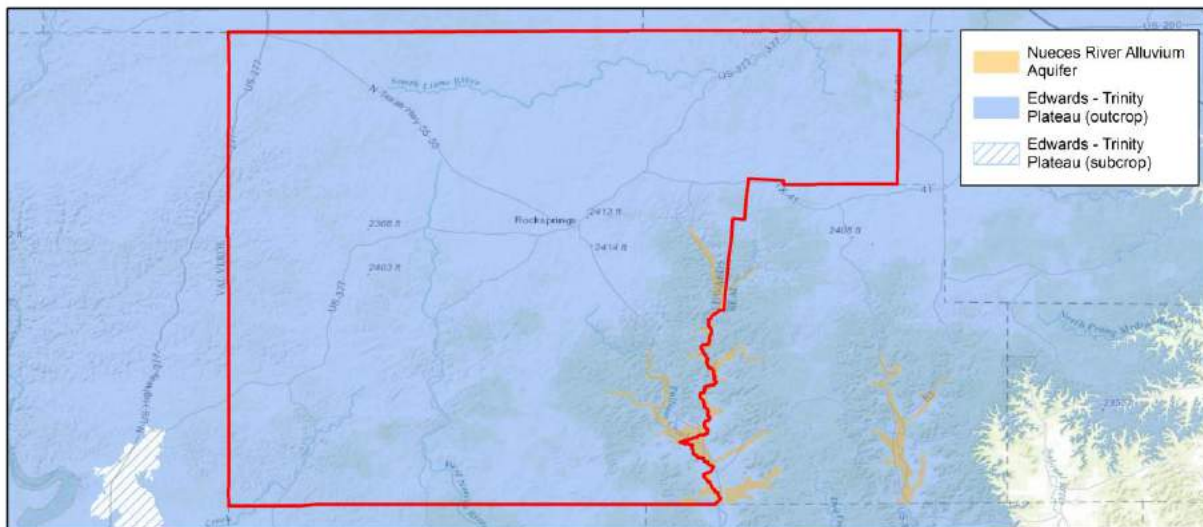


**Who are my water-planning representatives?** Jonathan Letz – Planning Group Chairman and Lee Sweeten – County Planning Representative.

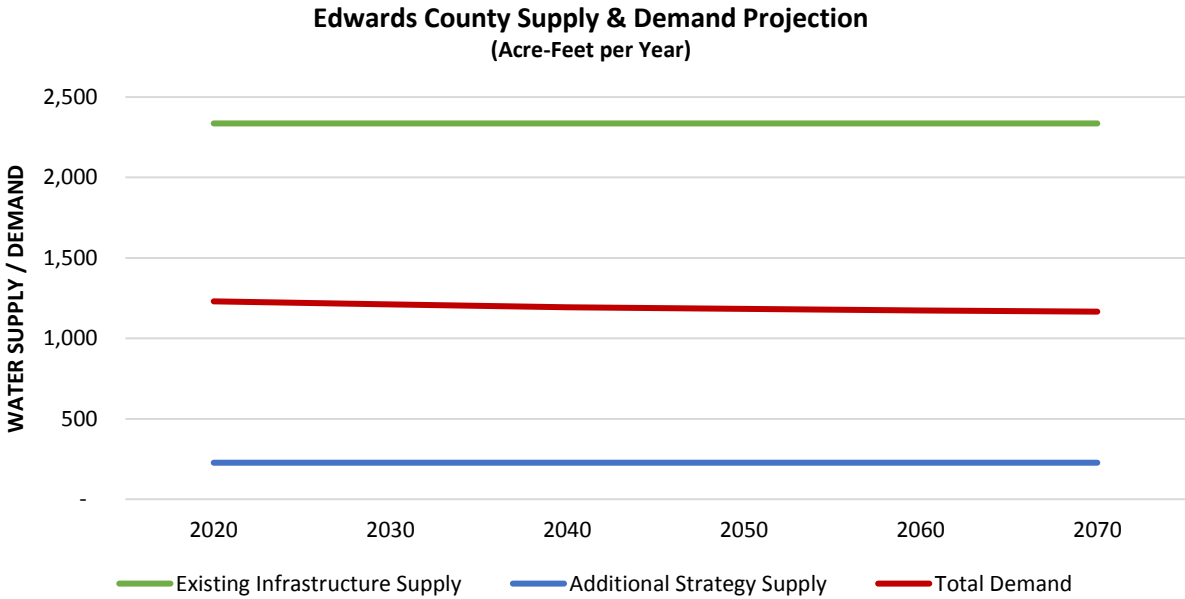
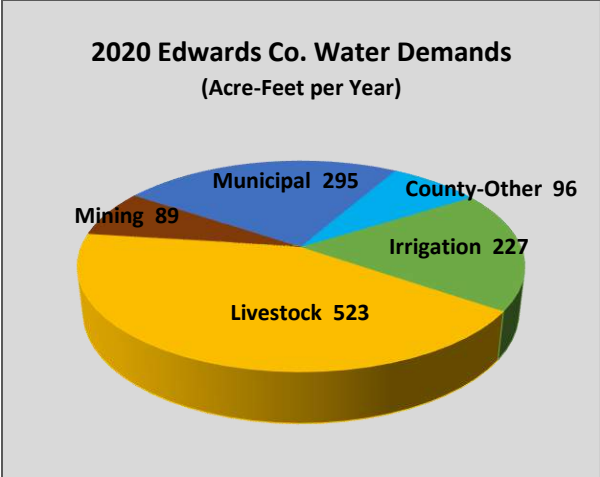
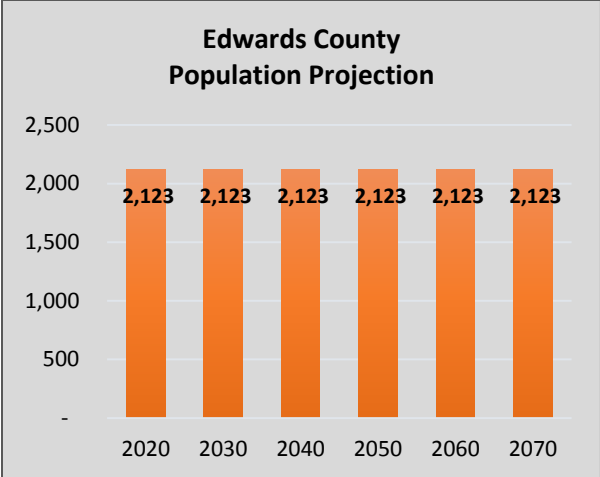


## What are the sources of my water supplies?

- Edwards-Trinity (Plateau) Aquifer
- Nueces River Alluvium Aquifer
- Surface Water:
  - Colorado River
  - Nueces River

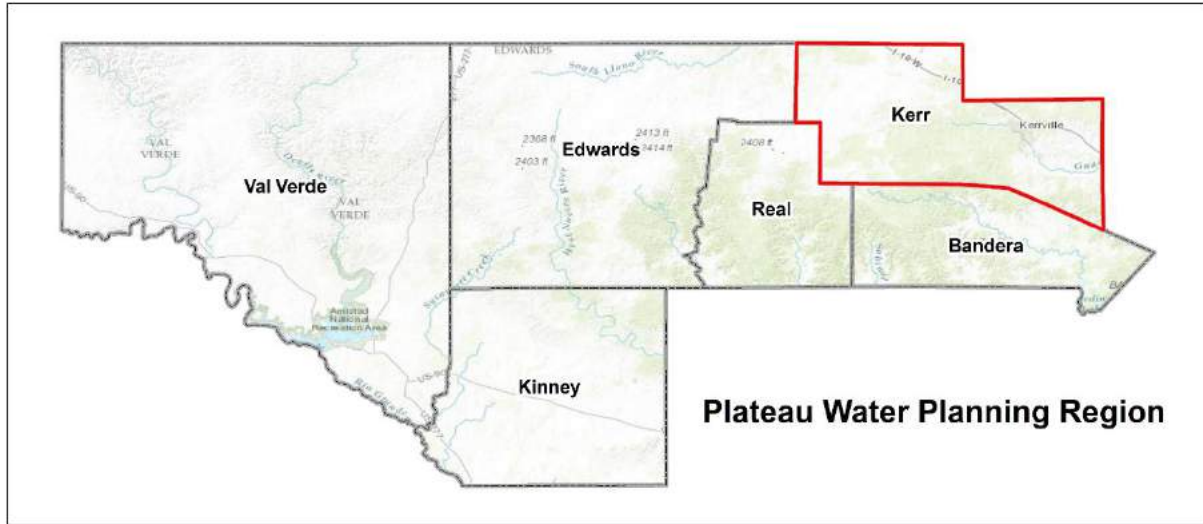


# EDWARDS COUNTY

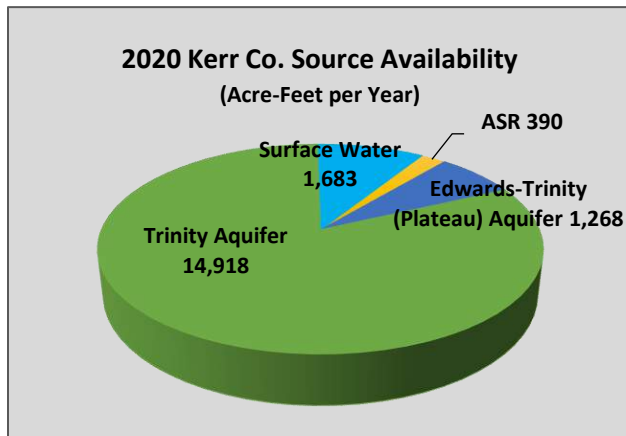


Water User Group	Strategy
City of Rocksprings	Water loss audit and main-line repair
	Additional groundwater well
County-Other	Water loss audit and main-line repair for Barksdale WSC
	Additional well in the Nueces River Alluvium Aquifer
	Vegetative land use management
Livestock	Additional groundwater wells
Mining	Additional groundwater wells

# KERR COUNTY

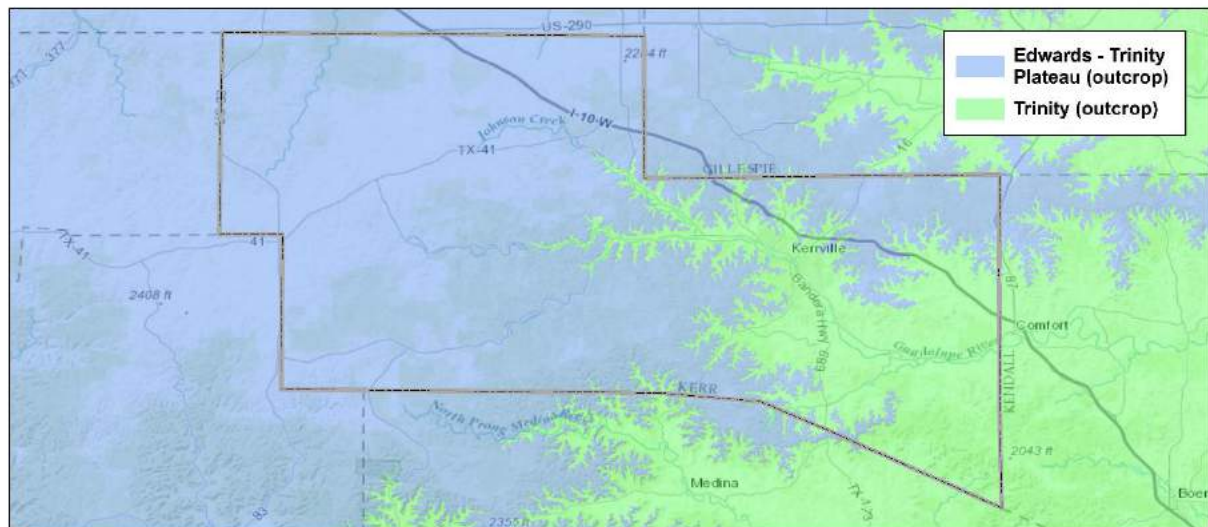


**Who are my water-planning representatives?** Jonathan Letz – Planning Group Chairman; Ray Buck – UGRA (General Manager); Gene Williams – HGCD (General Manager); Charlie Wiedenfeld – County Planning Representative and Stuart Barron – County Planning Representative.



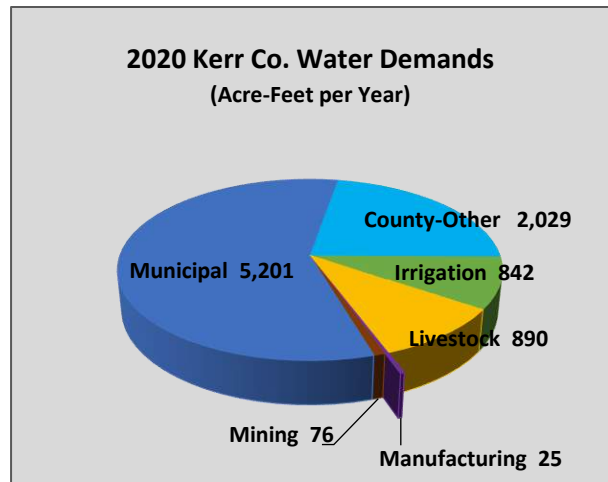
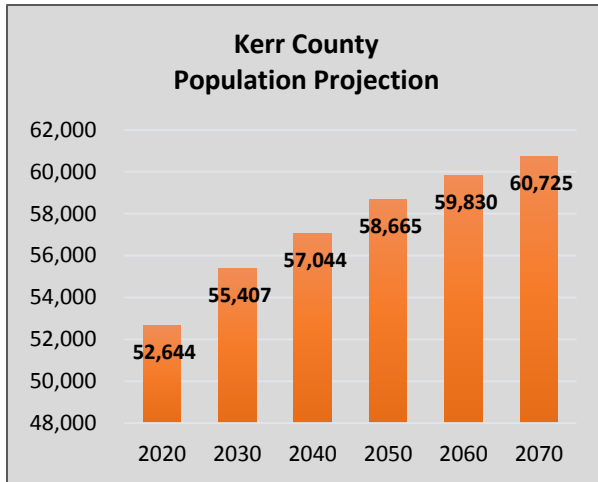
## What are the sources of my water supplies?

- Edwards-Trinity (Plateau) Aquifer
- Trinity Aquifer
- ASR
- Surface Water:
  - Guadalupe River

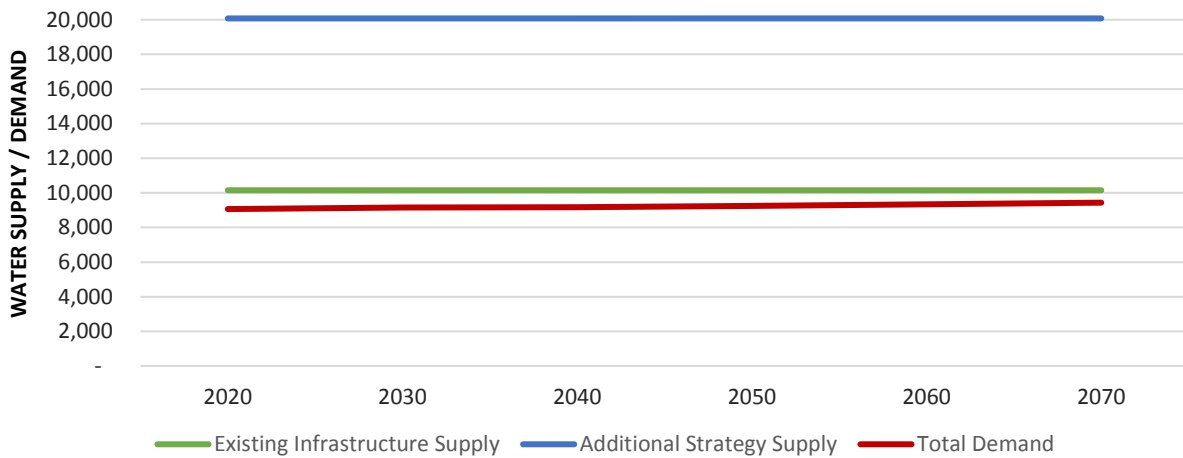




# KERR COUNTY



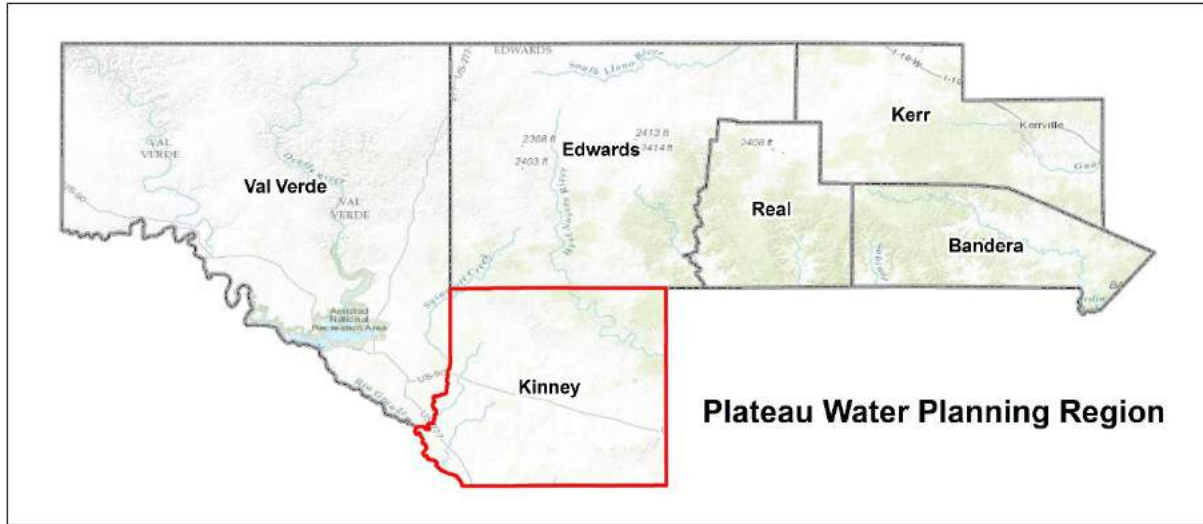
**Kerr County Supply & Demand Projection (Acre-Feet per Year)**



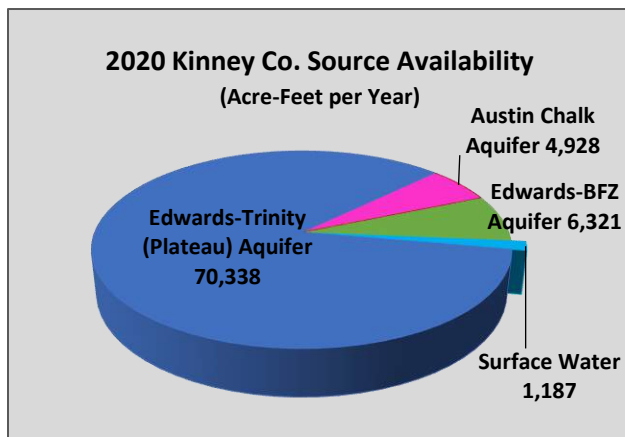
Note: Strategies listed below for Eastern Kerr County are denoted as <sup>2</sup>(EKCRWSP)

Water User Group	Strategy
City of Kerrville	Increase wastewater reuse
	Water loss audit and main-line repair
	Purchase water from UGRA
	Increased water treatment and ASR capacity
Loma Vista WSC	Conservation: Public information
	Additional groundwater well
County-Other	Conservation: Public information
	Vegetative land use management
	Acquisition of surface water rights
	Construction of an off-channel surface water storage <sup>2</sup> (EKCRWSP)
	Construction of surface water treatment facilities and transmission lines <sup>2</sup> (EKCRWSP)
	Construction of ASR facility <sup>2</sup> (EKCRWSP)
	Construction of wellfield for dense, rural areas <sup>2</sup> (EKCRWSP)
	Construction of desalination plant <sup>2</sup> (EKCRWSP)
Construction of an Ellenburger Aquifer water supply well <sup>2</sup> (EKCRWSP)	
Irrigation & Mining	Additional groundwater well

# KINNEY COUNTY

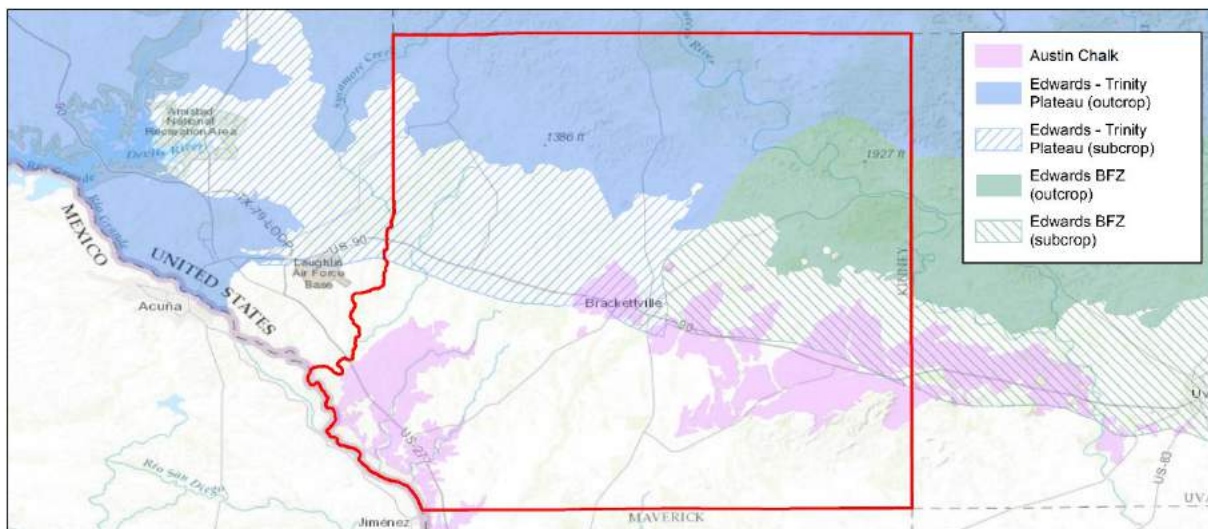


**Who are my water-planning representatives?** Jonathan Letz – Planning Group Chairman; Rene Villareal – Kinney County GCD Representative and Tully Shahan – County Planning Representative.

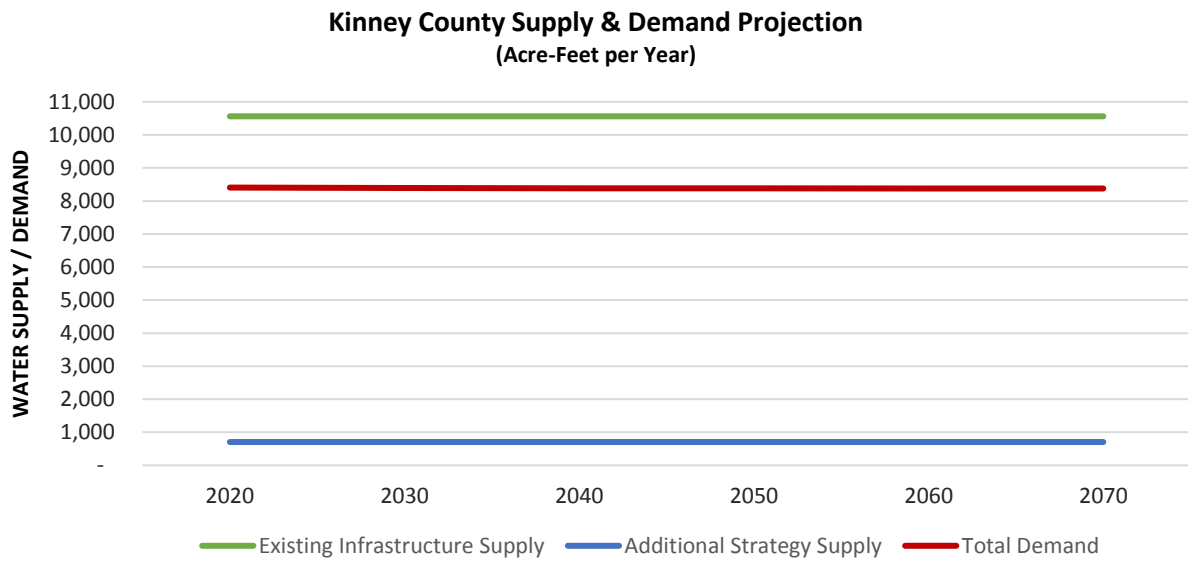
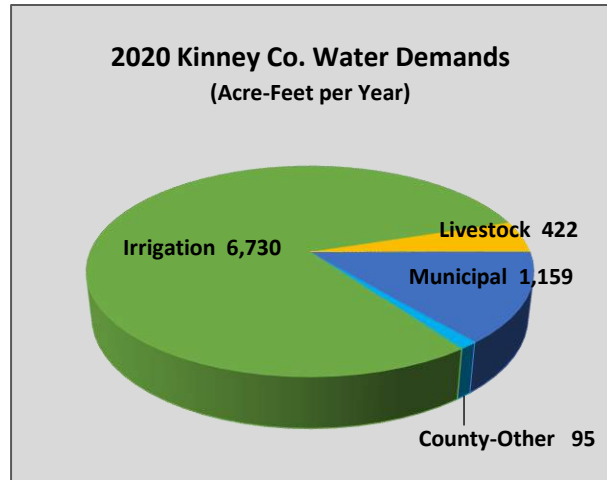
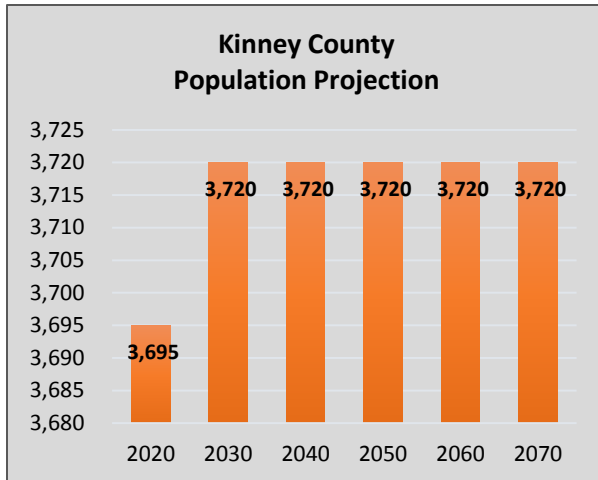


## What are the sources of my water supplies?

- Edwards-Trinity (Plateau) Aquifer
- Austin Chalk Aquifer
- Edwards – BFZ Aquifer
- Surface Water:
  - Rio Grande

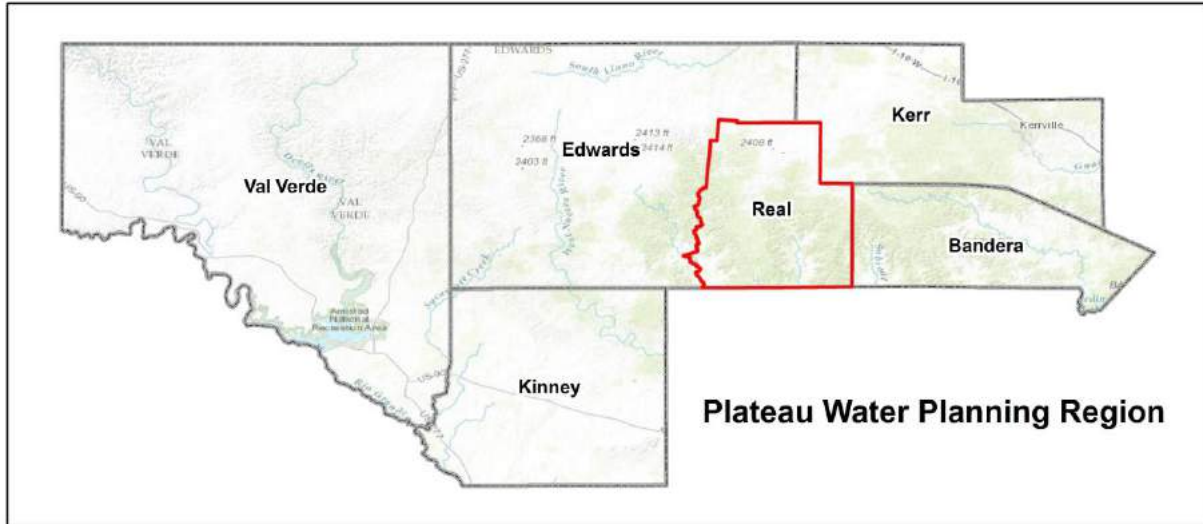


# KINNEY COUNTY

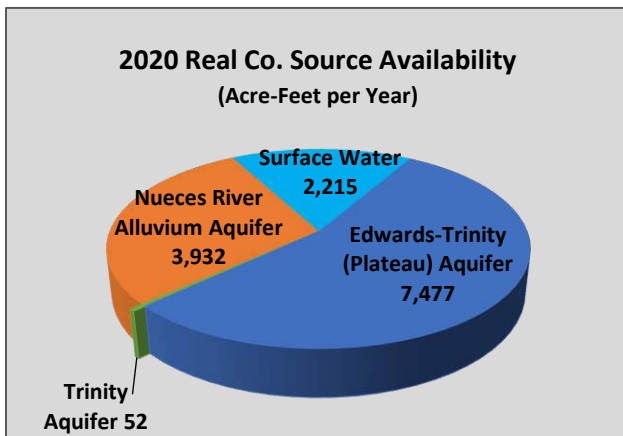


Water User Group	Strategy
City of Brackettville	Water loss audit and main-line repair
	Increase supply to Spoford with new water line
	Increase storage facility
Fort Clark Springs MUD	Increase storage facility
County-Other	Vegetative land use management
Livestock	Additional groundwater wells

# REAL COUNTY

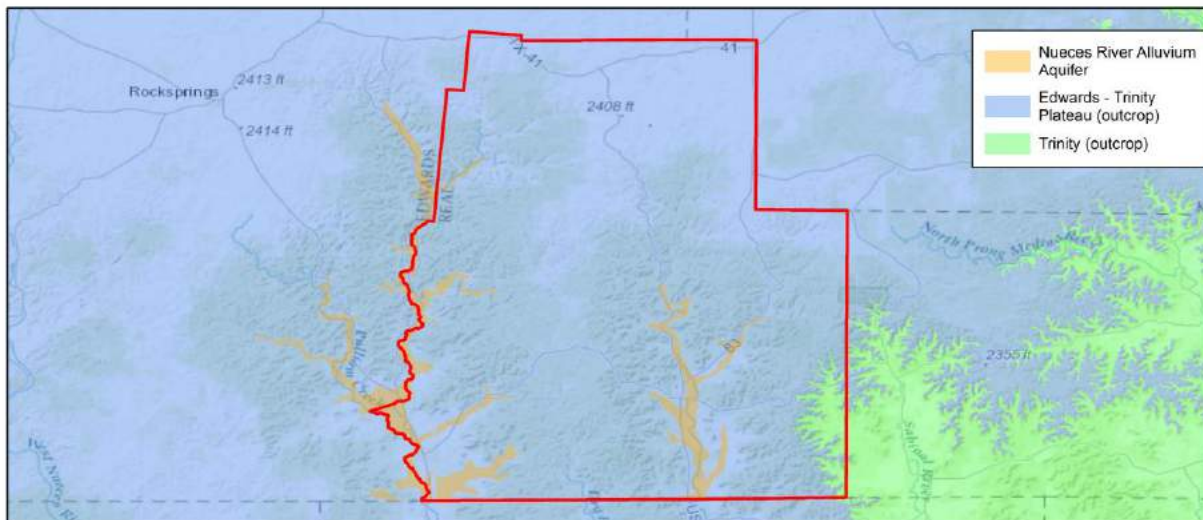


**Who are my water-planning representatives?** Jonathan Letz – Planning Group Chairman and Roland Trees – Real-Edwards Conservation and Reclamation Representative.

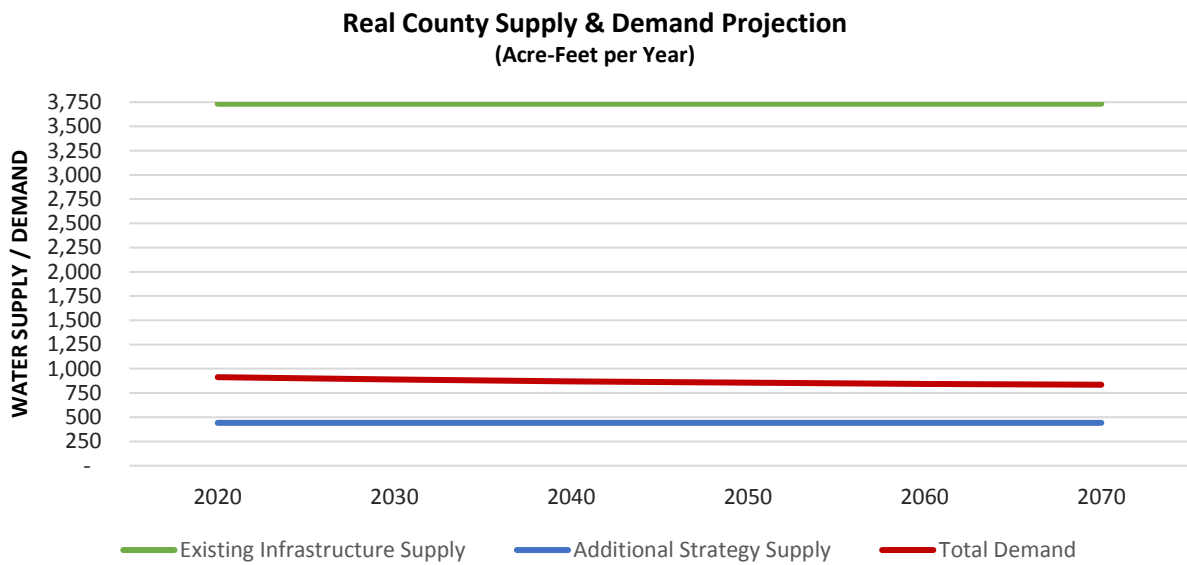
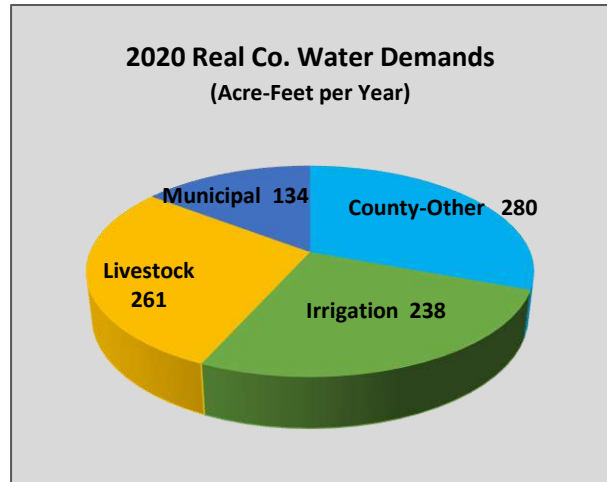
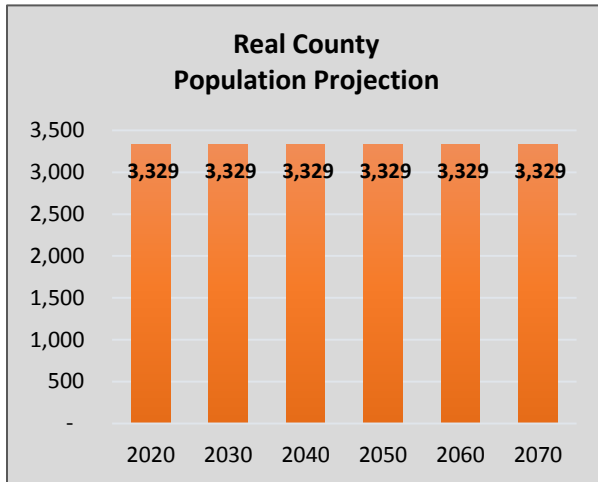


## What are the sources of my water supplies?

- Edwards-Trinity (Plateau) Aquifer
- Trinity Aquifer
- Nueces River Alluvium Aquifer
- Surface Water:
  - Nueces River

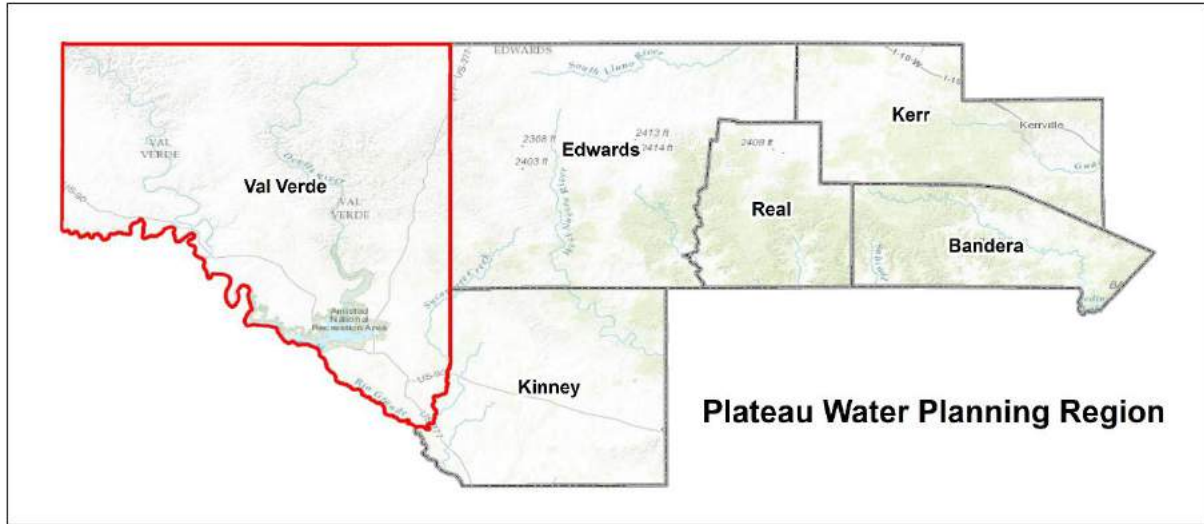


# REAL COUNTY

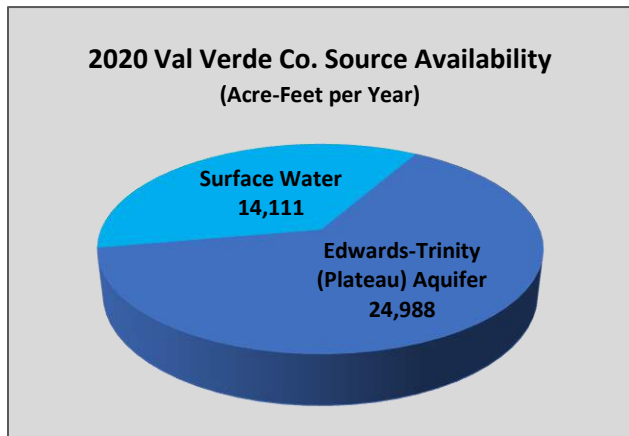


Water User Group	Strategy
City of Camp Wood	Conservation: Public information
	Additional groundwater wells
City of Leakey	Water loss audit and main-line repair
	Additional groundwater well
	Develop interconnections between wells within the City
County-Other	Water loss audit and main-line repair for Real WSC
	Vegetative land use management
	Additional well for Oakmont Saddle WSC
Livestock	Additional groundwater wells

# VAL VERDE COUNTY

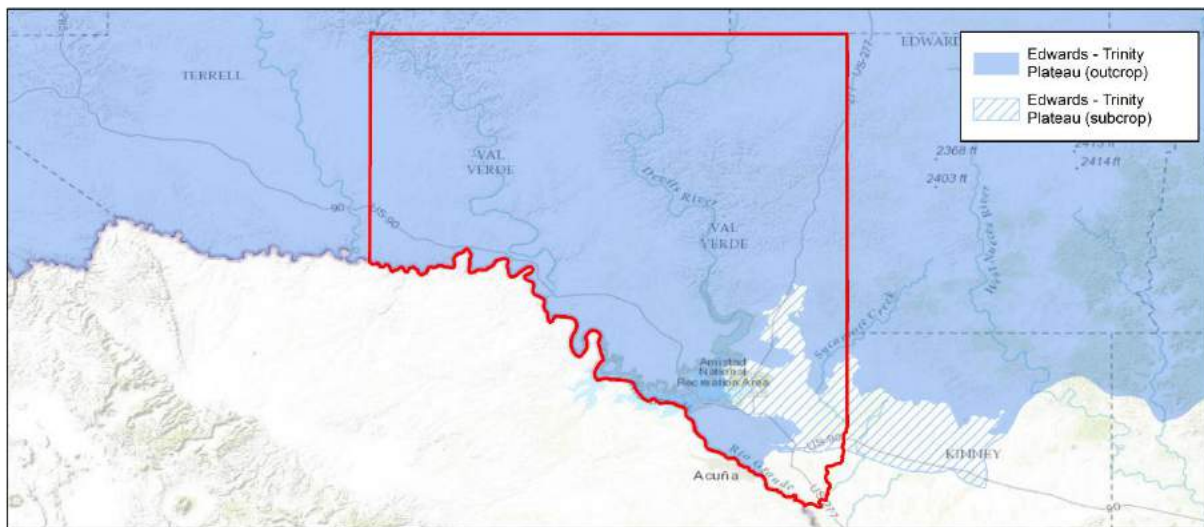


**Who are my water-planning representatives?** Jonathan Letz – Planning Group Chairman; Jerry Simpton – Planning Group Vice Chairman; Otila Gonzalez - County Planning Representative; Mitch Lomas – County Planning Representative and Thomas M. Qualia – County Planning Representative.

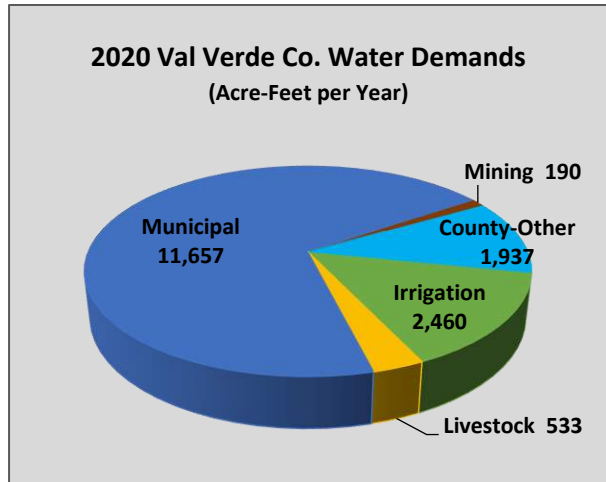
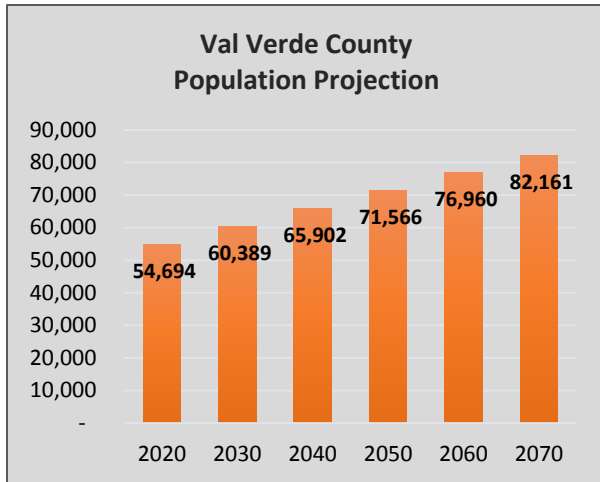


## What are the sources of my water supplies?

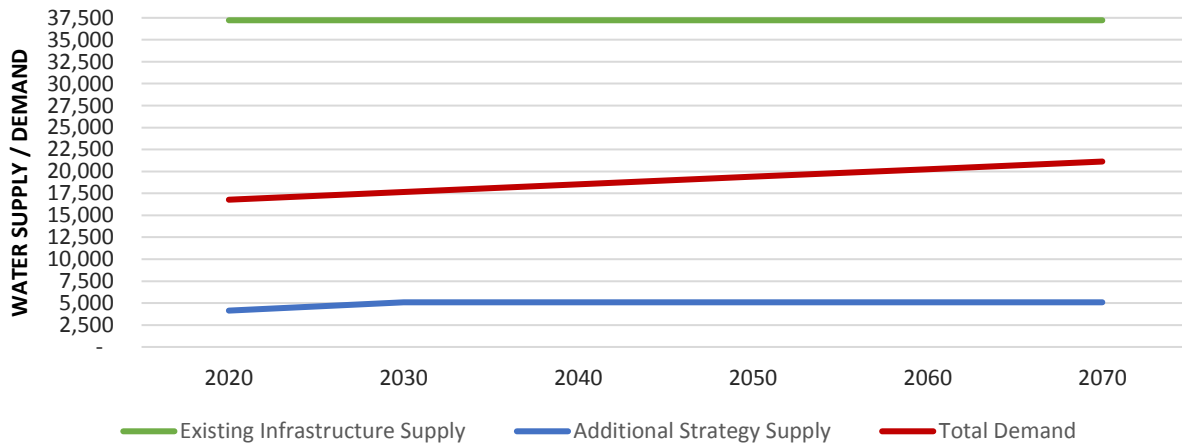
- Edwards-Trinity (Plateau) Aquifer
- Surface Water:
  - Rio Grande



# VAL VERDE COUNTY



### Val Verde County Supply & Demand Projection (Acre-Feet per Year)



Water User Group	Strategy
City of Del Rio	Water loss audit and main-line repair
	Drill & equip new well, connect to distribution system
	Water treatment plant expansion
	Develop a wastewater reuse program
County-Other	Vegetative land use management
Mining	Additional groundwater well

*This page intentionally left blank*