

LBG-Guyton Technical Consultant Presentation

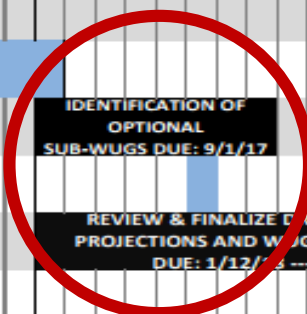
Plateau RWPG Meeting

Overview of Previous Meeting

- **February 23rd Meeting**
- **Reviewed draft population, municipal and mining water demand projections.**

Working Schedule: Fifth Cycle of Regional Water Planning^A

ITEM	ENTITY	ACTIVITY	Planning Task #	2016				2017				2018				2019				2020																			
				J	F	M	A	M	J	J	A	S	O	N	D	J	F	M	A	M	J	J	A	S	O	N	D	J	F	M	A	M	J	J	A	S	O	N	D
1	TWDB	Release list of new municipal WUGs under utility boundary process	2B																																				
2	TWDB	Draft population and mining, and municipal demand projections prepared and made available by TWDB	2A, 2B																																				
3	RWPG	Identify any optional sub-WUGs for RWPA so the TWDB can incorporate these entities into the DB22 data structure	2B																																				
4	TWDB	Draft livestock, irrigation, manufacturing, and steam-electric power demand projections made available by TWDB	2A																																				
5	RWPG	Review draft projections and finalize adjustments and WUG list with TWDB staff	2A, 2B																																				
6	TWDB	Adopt all projections	2A, 2B																																				
7	TWDB/RWPG	DB22 prepared and released for data entry ^{B,C}																																					
8	TWDB/RWPG	DB22 consultant training																																					
9	RWPG	Evaluate water availability and existing water supplies	3																																				
10	RWPG	Identify Water Needs	4A																																				
11	RWPG	Identify potentially feasible WMSs	4B																																				
12	TWDB	New Modeled Available Groundwater (MAG) volumes being issued by TWDB based on updated Desired Future Conditions (DFCs) - ESTIMATED	3																																				
13	TWDB	TWDB Planning Rule Revisions																																					
14	TWDB/RWPG	Next RFA for Regional Water Planning Grant (Public Notice, remaining SOW, Total Study Cost)																																					
15	TWDB/RWPG	Amend Contracts with additional funding ^D (WMS evaluation funding to remain as notice-to-proceed)																																					
16	TWDB	Review and negotiate SOW submittals for WMS evaluations and issue notice-to-proceeds ^D	5A																																				
17	RWPG	Prepare and submit Technical Memos	4C																																				
18	RWPG	Complete 2021 Regional Water Plans	ALL																																				
19	HB4 SHC	HB4 Stakeholder Committee Meet to Consider Uniform Standards for 2021 Prioritizations																																					
20	RWPG	Prepare and submit project prioritizations from 2021 RWPs	12																																				



Note A: Estimated timeline based on currently available agency resources and subject to change
 Note B: DB22 is the updated, online water planning database for the 2022 State Water Plan
 Note C: Anticipated database availability dates are estimates based on currently available agency resources
 Note D: Subject to available funding

- RWPG activity =
- Contracting activity =
- TWDB activity =
- Database activity =

IPP DUE MARCH 3, 2020 ---->

SUBMITTAL TO TWDB OF FINAL ADOPTED PLAN BY October 14, 2020 ---->

Due 10/14/20-->

Current Meeting Activity

- **Select municipal WUGs and sub-WUGs for submittal by Sept. 1st**
- **Approve mining water demand projections.**
- **Discuss draft non-municipal demand projections.**

**Recommended
Utility-Based
WUG's**

**Utility-Based Water User Groups
Plateau Region 2021 Water Plan
(Projected Water Demands Acre-Feet per Year)**

County	WUG Name	2020	2030	2040	2050	2060	2070
Bandera	Bandera	342	383	404	413	419	423
	Bandera County FWSD #1	141	158	167	171	174	175
Edwards	Rocksprings	296	290	285	284	284	284
Kerr	Kerrville	4,622	4,692	4,709	4,763	4,825	4,878
	Kerrville South Water	341	346	347	352	358	363
Kinney	Brackettville	608	602	594	593	592	592
	Fort Clark Springs MUD	618	616	612	610	609	609
Real	Camp Wood	143	139	136	135	135	135
	Leahey	193	186	180	178	177	177
Val Verde	Del Rio Utilities Commission	10,558	11,053	11,554	12,130	12,733	13,326
	Laughlin Air Force Base	1,018	1,114	1,215	1,277	1,276	1,276
	*Val Verde County WCID Comstock						

***Data to be provided by TWDB**

**‘County Other’
sub – WUG’s**

Mining Water Demand Projections

Mining Water Demand Projections

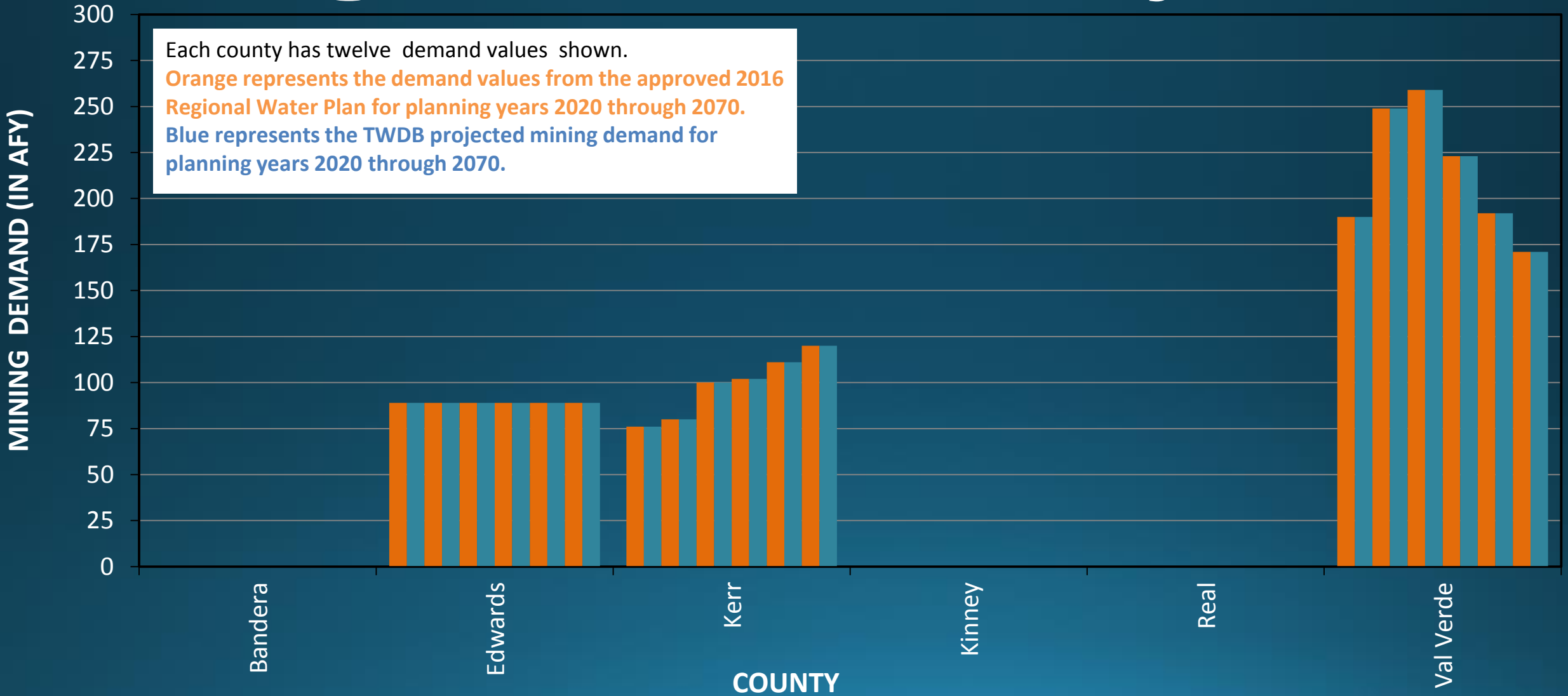
Plateau Region 2021 Water Plan

	2020	2030	2040	2050	2060	2070
Edwards	89	89	89	89	89	89
Kerr	76	80	100	102	111	120
Val Verde	190	249	259	223	192	171

Note: Same volumes as the 2016 Plan

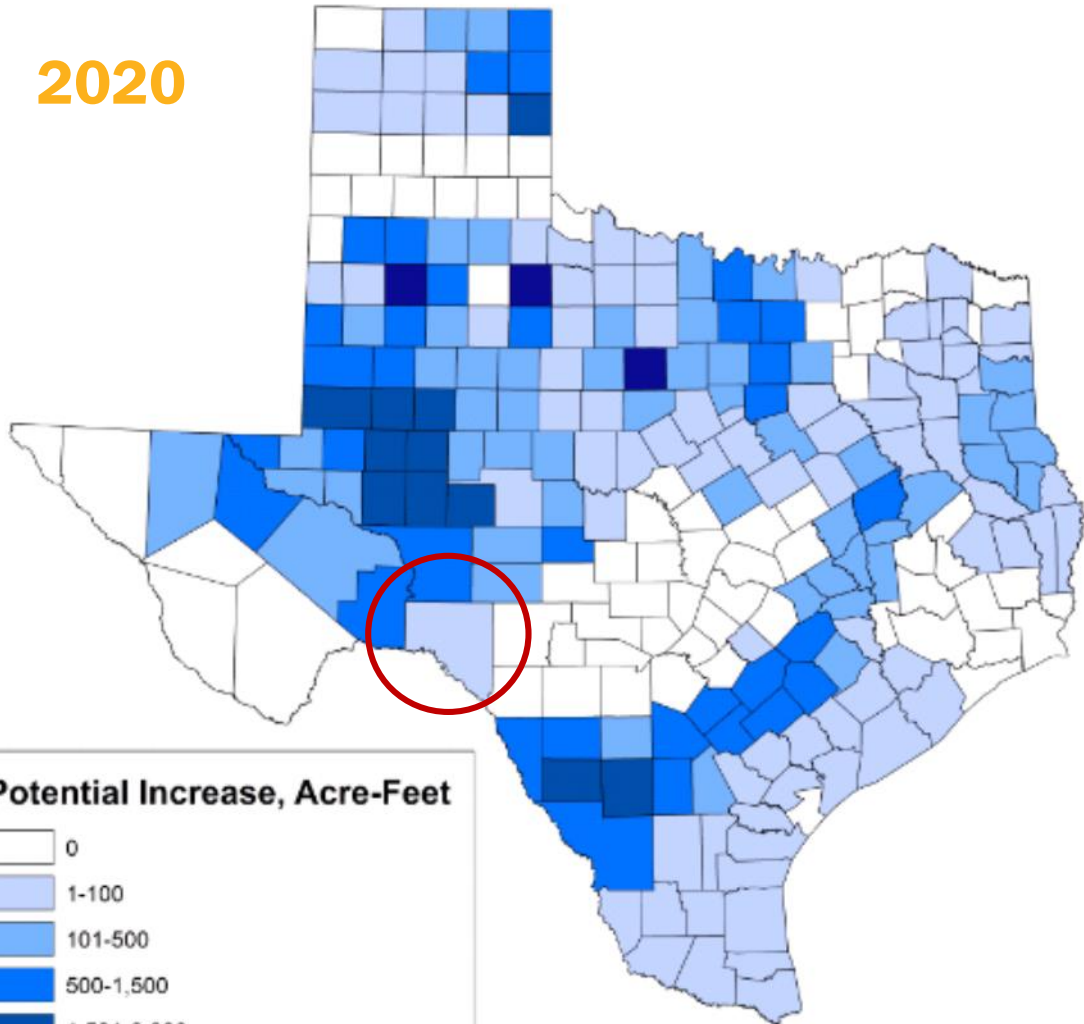
Mining Water Demand Projections

Each county has twelve demand values shown.
Orange represents the demand values from the approved 2016 Regional Water Plan for planning years 2020 through 2070.
Blue represents the TWDB projected mining demand for planning years 2020 through 2070.

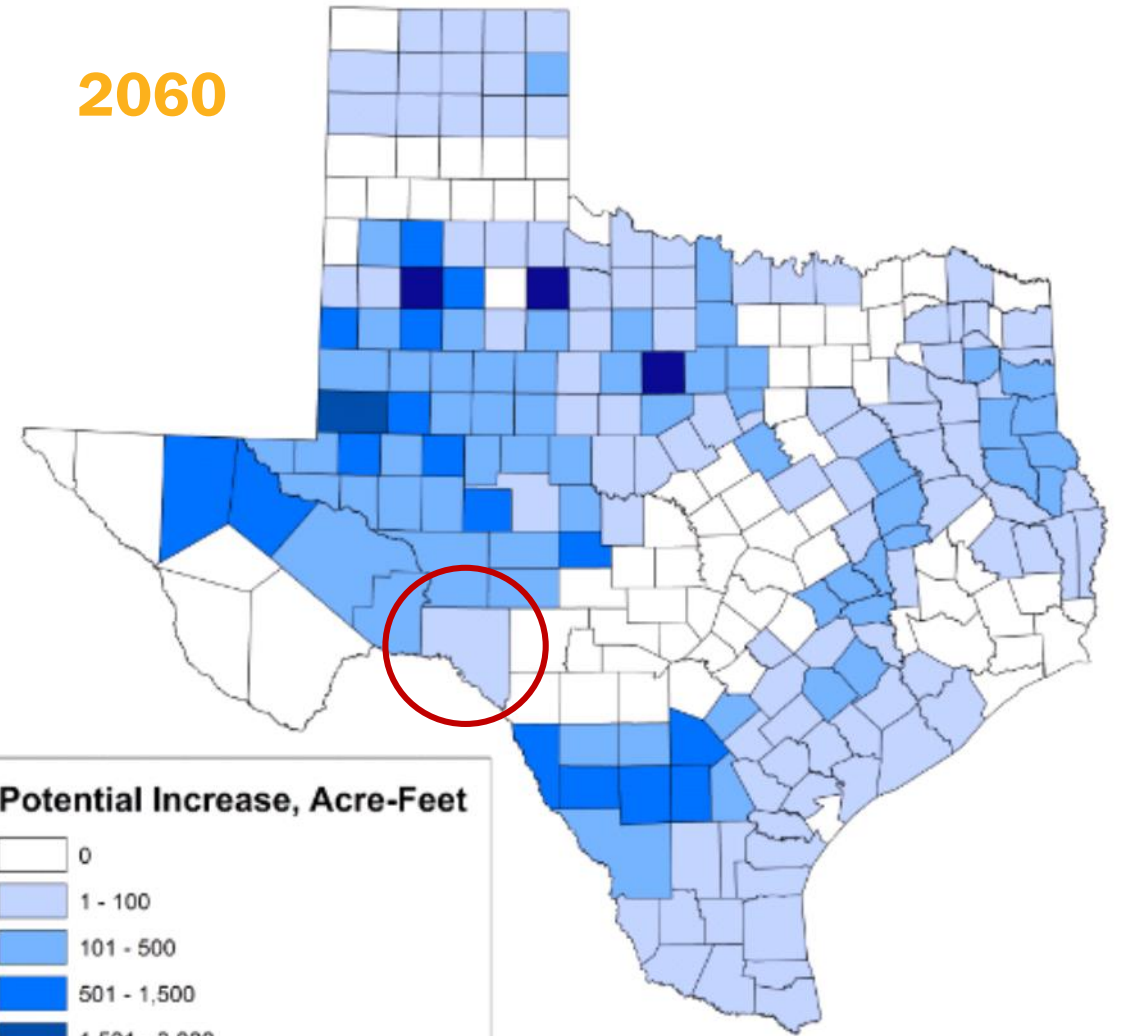


Reuse & Brackish Groundwater Potential Increase in Mining Demands Impacts Only Val Verde County (1 – 100 acft/yr.)

2020



2060

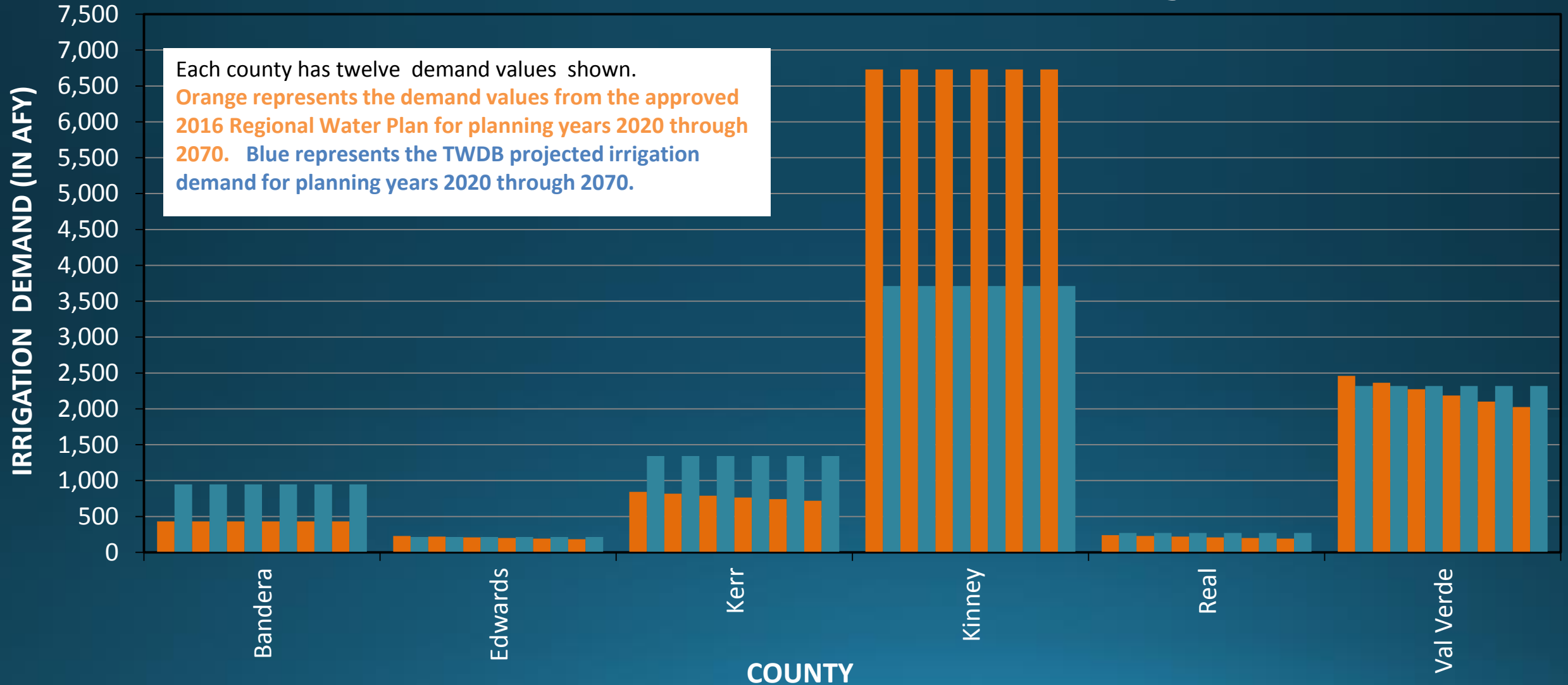


Draft
Non-Municipal
Water Demand
Projections

Irrigation Water Demand Projection Methodology

- **Baseline methodology is the average of the most recent five-years of water use estimates held constant between 2020 and 2070.**
- **Counties = total groundwater availability over the planning period < the groundwater portion of the baseline,**
 - ❖ **draft irrigation projections will begin to decline in 2030 or later, to be compatible with groundwater availability volumes.**

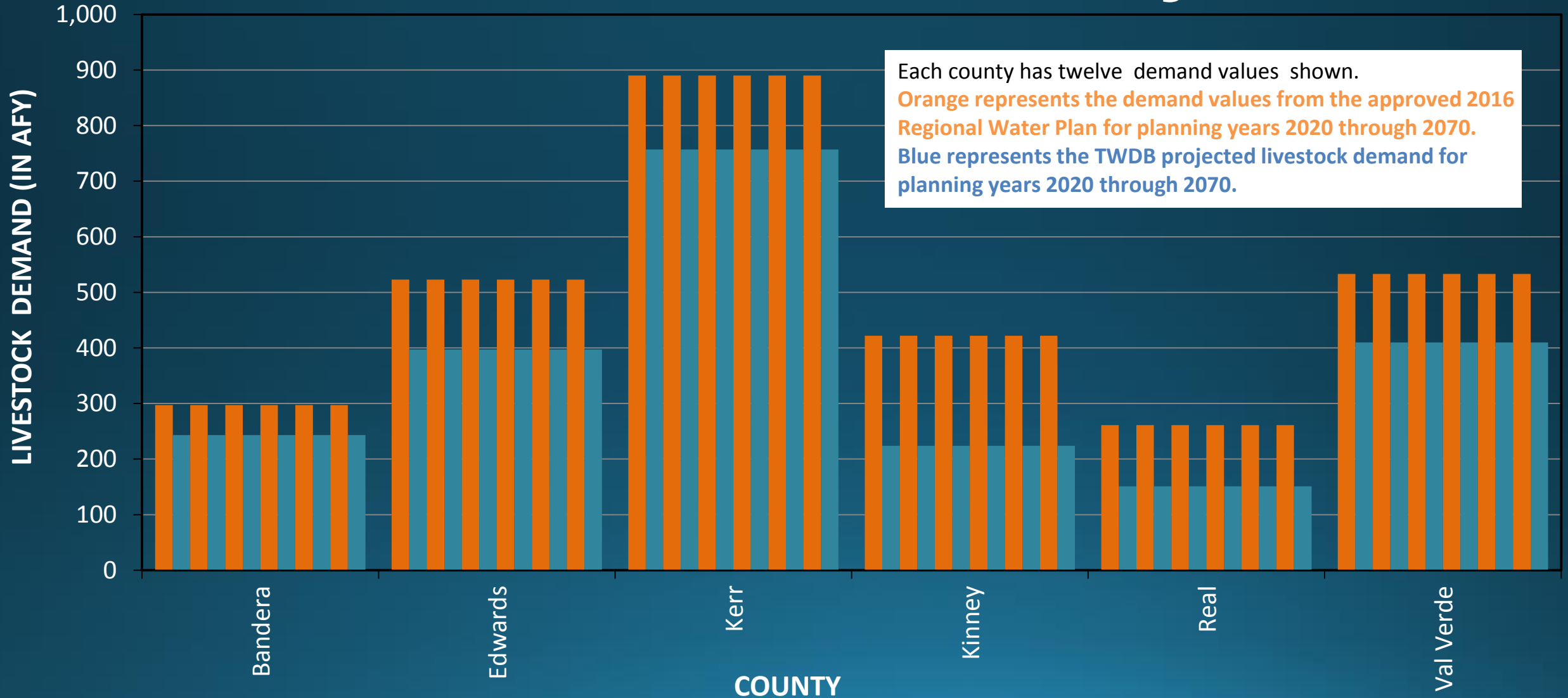
Irrigation Water Demand Projections



Livestock Water Demand Projection Methodology

- **Water use estimates based on the following combination of data:**
 - ❖ **Water-use survey data**
 - ❖ **TWDB estimates based on**
 - **Livestock inventory data from the National Agricultural Statistical Service (NASS)**
 - **Texas Department of Agriculture**
 - **Per head water use consumption by animal class**
 - ❖ **All counties are projected to have a decrease in use**

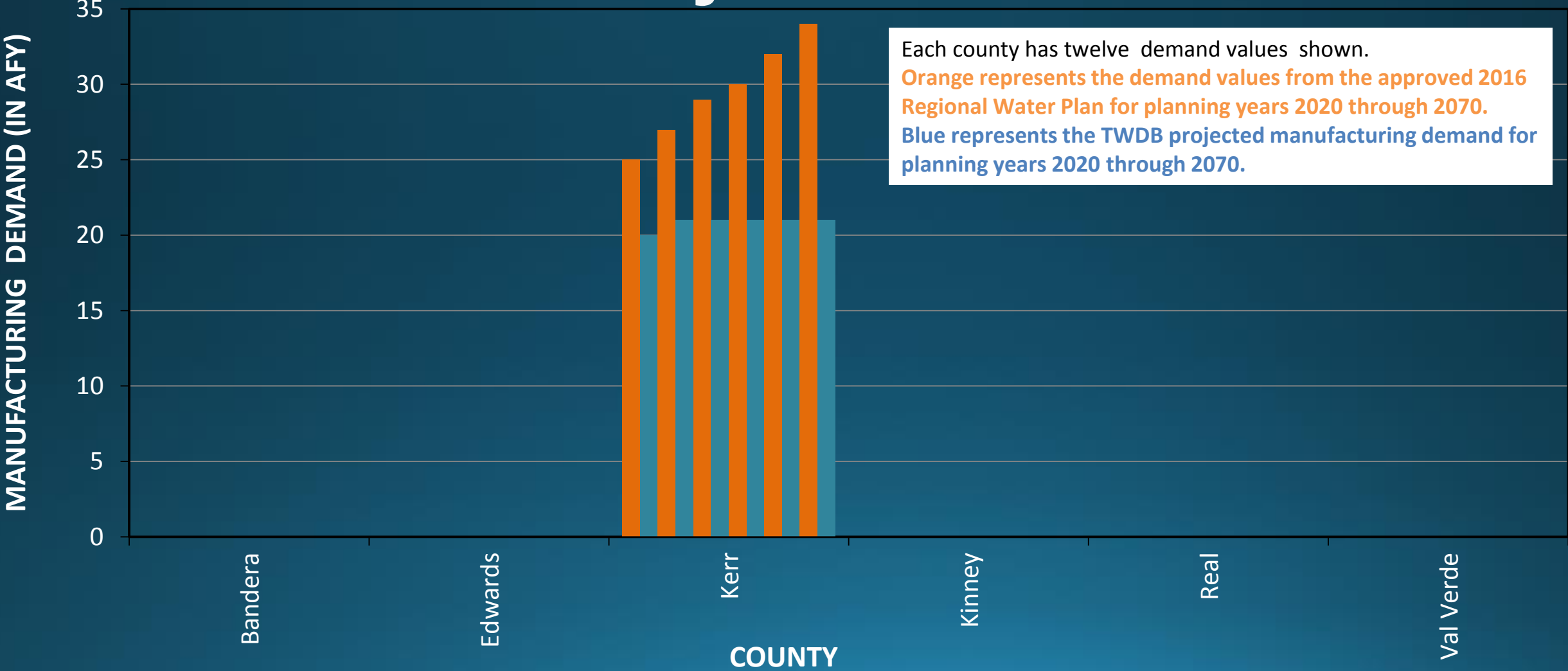
Livestock Water Demand Projections



Manufacturing Water Demand Projection Methodology

- 2020 water demand projection will be based on the highest county aggregated manufacturing water use in the most recent five-years of data from the annual water use survey.
- 2020 to 2030 = most recent 10-year projections from employment growth from TWC.
- 2040 through 2070 = use held constant.

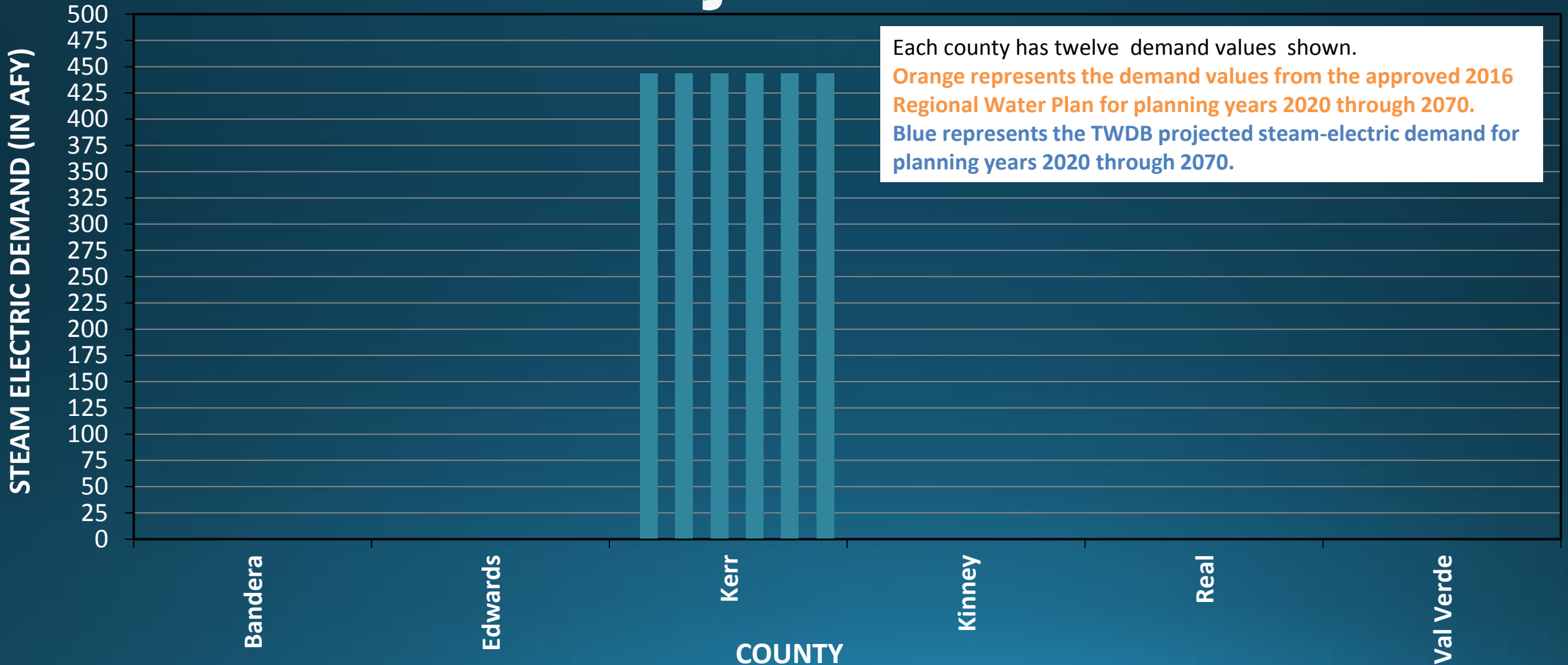
Manufacturing Water Demand Projections



Steam-Electric Power Water Demand Projection Methodology

- 2020 water demand projection will be based on the highest county aggregated SEP water use in the most recent five-years of data from the annual water use survey.
- Future facilities listed in the state & federal reports will be added to the demand projections from operation date to 2070.
- Facilities scheduled to retire will be subtracted.

Steam-Electric Water Demand Projections



Regional Water Demand Projections



Moving Forward...

1

Disbursement of
TWDB First
Amended
Contracts

2

Municipal & Non-
municipal water
demand review &
revisions

3

Draft demand
revision requests
due to TWDB Jan.
12, 2018

Next Meeting...

- **October or November**